

HYDESTOR “IFS” MOBILE SHELVING



ASSEMBLY INSTRUCTIONS

**FOR ASSISTANCE PHONE
Marcus White
Hydestor Manufacturing Ltd
Telephone 09 274 0026
Or 0800 493 378**

-1-

IF 11

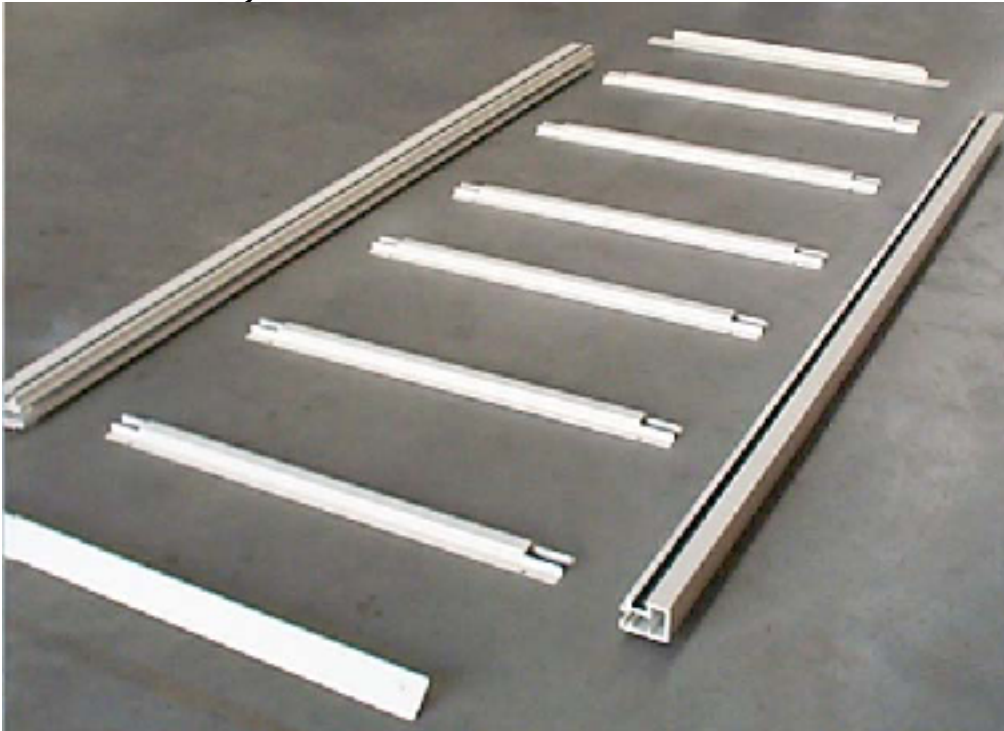
12/05/04

HYDESTOR MOBILE SHELVING ASSEMBLY INSTRUCTIONS

Tools required

10mm spanner
1 pt Phillips head screw driver
1 pt Flat head screw driver
Tape measure
Allen keys
Level
Handle template
Drill bits
Electric drill (not supplied in kit)

Track Assembly



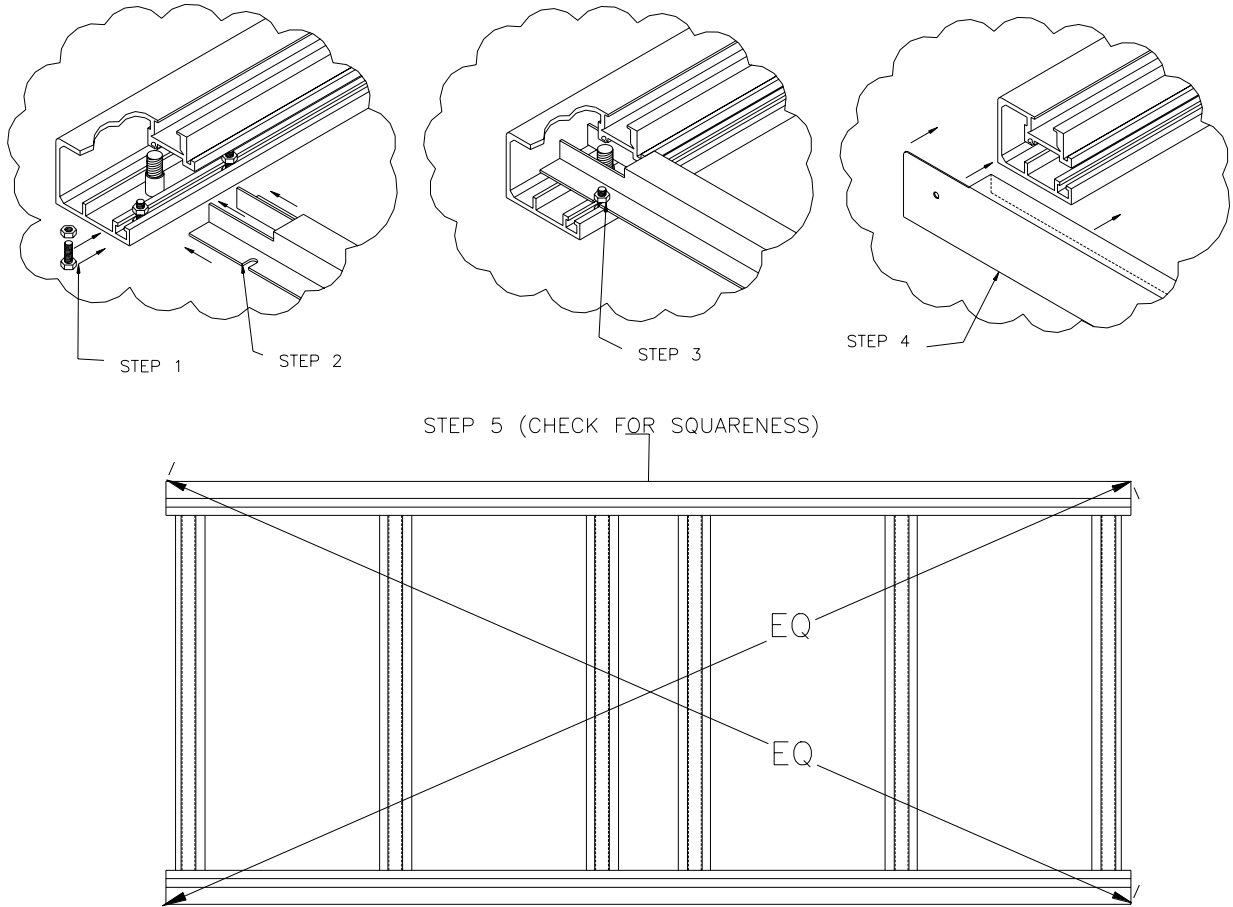
- Step 1** Layout track and bearers in position in workable area.
- Step 2** Slide M6 x 12 bolts for bearers along slot provided inside body of track to suit position of bearers. Insert bearers into first track. Each end bearer must be in 50mm from the end of the track and slotted in to fit around each screw foot. Insert bearers into second track, check that track is square all round by measuring diagonally before tightening all nuts and bolts. Position track system and using a builders level, adjust screw feet until tracks are level in both directions.
- Step 3** Fit selected flooring infill material. If space is tight complete the track/bearer assembly away from the walls and reposition after Step 4.

Step 4

Fit the first of 2 end caps, slide on pre assembled chassis and static bases in the order required being sure that the static is facing the correct way. Using the 4 clamp sets provided fix down to both tracks. Once all the chassis and bases are on the tracks screw on the second end cap. (See note - Step 6).

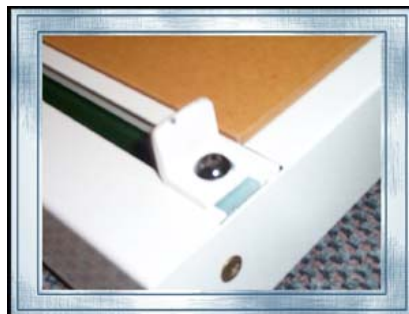
Step 5

Move track into final position. Ensure tracking system is square by checking that the diagonal measurement is the same. Loosen bolts and adjust as necessary, then re tighten bolts. Check that the unit is level. If not level adjust the screw feet, but ensure that the weight of the unit will be evenly distributed on all the feet.



Step 6

If track stops are required (single sided mobile only) fit one to each track behind the single sided mobile using clamp set provided. NB these are to be fitted before the second end cap is positioned.



IF 13

MOBILE BASE ASSEMBLY

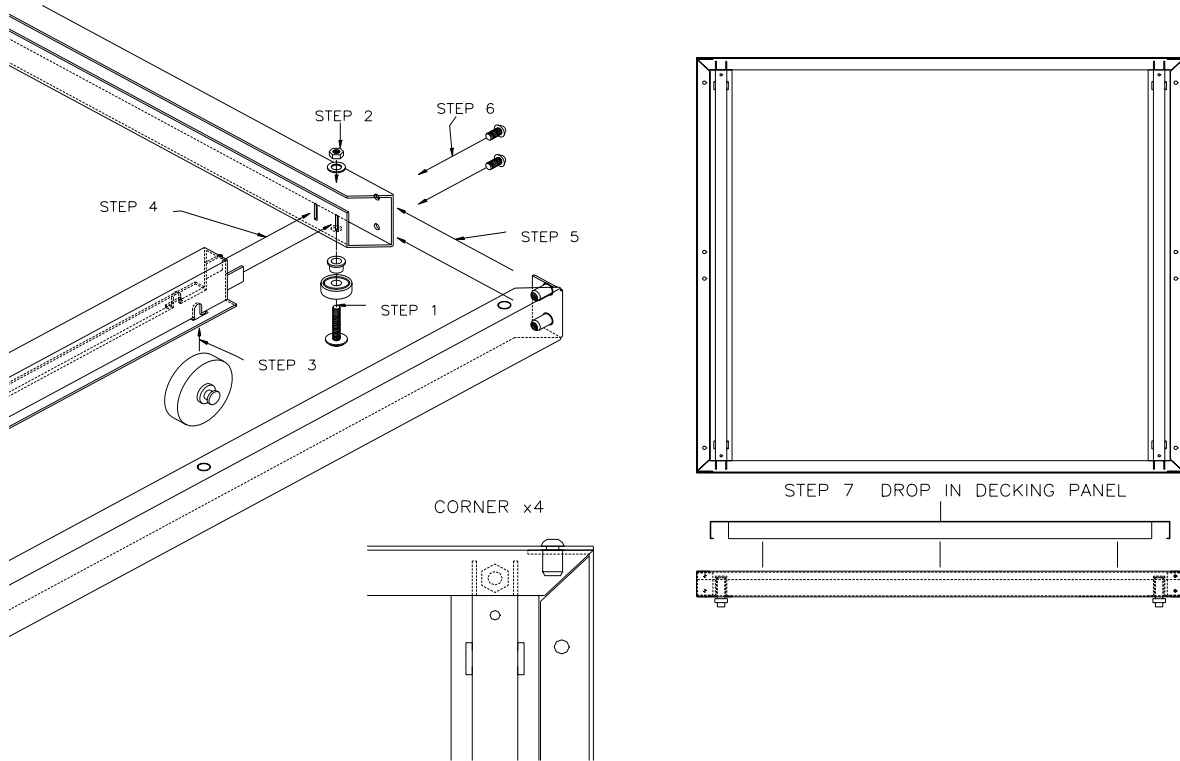
For each of the bases locate components

2 base rail

2 base end plate

2 base bearer

4 horizontal guide bearing support screws and bolts



Step 1 Insert nut and spring washer in base rail channel, insert bolt securing guide bearing.

Step 2 Tighten bolt from outside using “Allen” key. The guide bearings are now on the bottom of the base assembly.

Step 3 Insert wheels into base bearer.

Step 4 Slot base bearer into base rail with support tongues around guide bearing nuts.

Step 5 Bring the two base end plates together ensuring all fixing holes are facing upwards.

Step 6 Using M6x12 button head cap screws, screw through base rail into nutserts in base end plates.

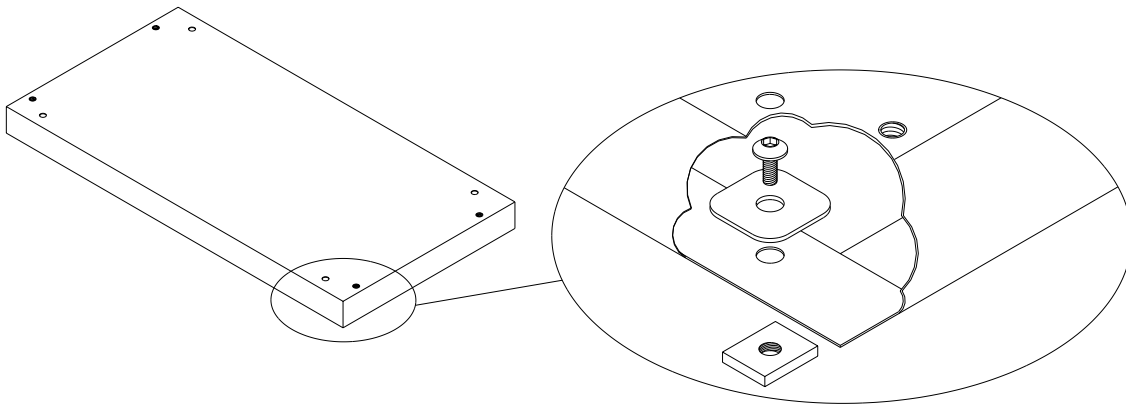
Step 7 Fit decking panels to mobile chassis.

Repeat steps 1-7 for all mobile base assemblies.

BUILDING UNITS ON STATIC BASE

Static Note: Static base can be moved along track if required when building by loosening the static clamps.

Step 1 Insert the four bolts into the holes on the bottom of the static base then screw on loosely the square threaded washer. Slide the static base into the track assembly.
Move the static base to the end of the track and tighten the bolt using an “Allen”key



Step 2 Using 6mm gutter bolts attached end panel to one end only to static base by screwing gutter bolts into nutserts.

Step 3 Bolt on bottom cladding panel in 3 places on top, middle and bottom, doing up nuts and bolts finger tight only at this stage. Repeat for top cladding panel.

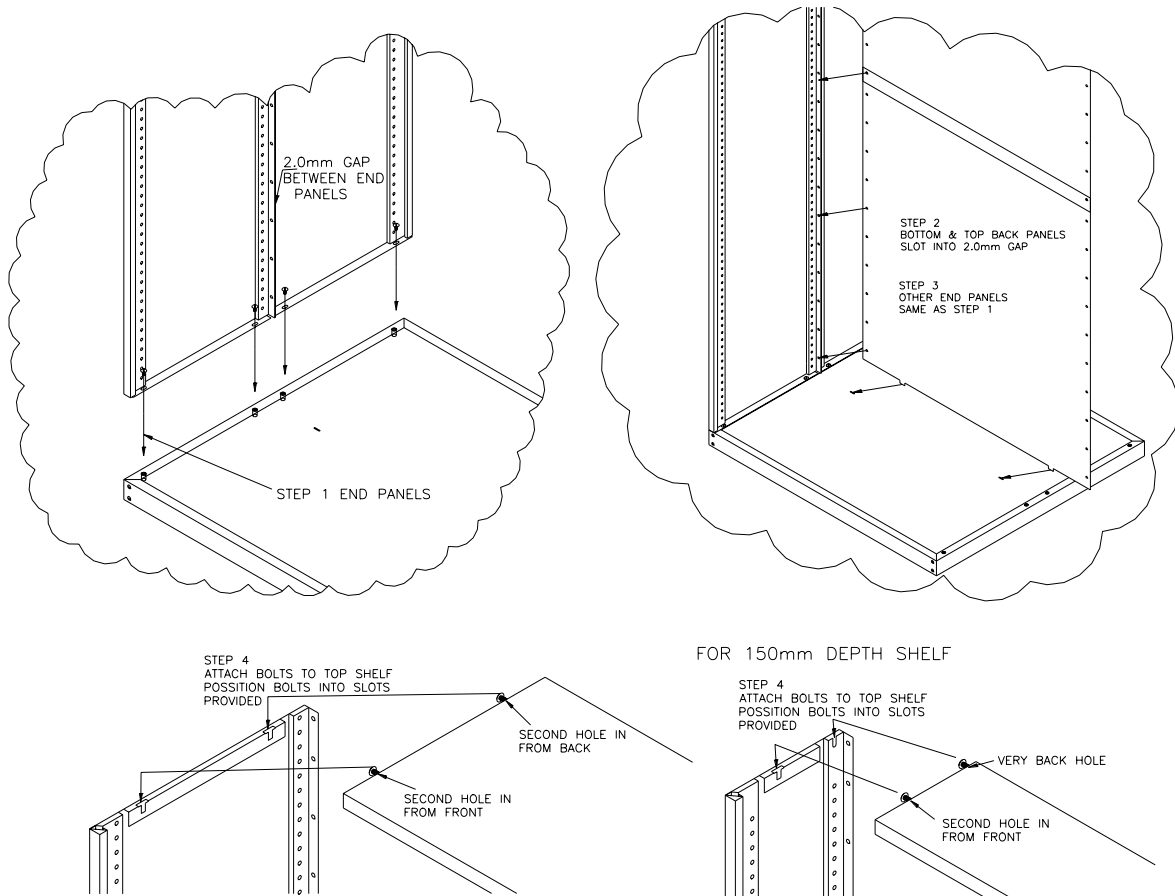
Step 4 Same as step 2, screw end panel to static base with gutter bolts. Then bolt on cladding panels to match the other side once again finger tight only.

Step 5 Line up top and bottom cladding panels so sides of cladding panels are flush and bolt both cladding panels together through centre slot tighten so cladding panels stay together. Pre-assemble bolts into each end of top shelf and slot into end panels. Once done, line up S/F unit with D/F unit, when S/F unit matches D/F unit tighten up all nuts and bolts in cladding panels. So unit is rigid, square up bottom edge of cladding panel with chassis. Attach cladding panel to chassis rail with button head tek screw.

Step 6 Slot in shelf clips to suit shelf spacing and place shelves onto clips.

BUILDING UNITS (D/F MOBILE)

(Assemble double-faced units first to square up end units)



Step 1 Using 6mm gutter bolts attach back to back end panels on one end only to chassis by screwing gutter bolts in to nutsert leaving a 2.0mm gap between them for back panels.

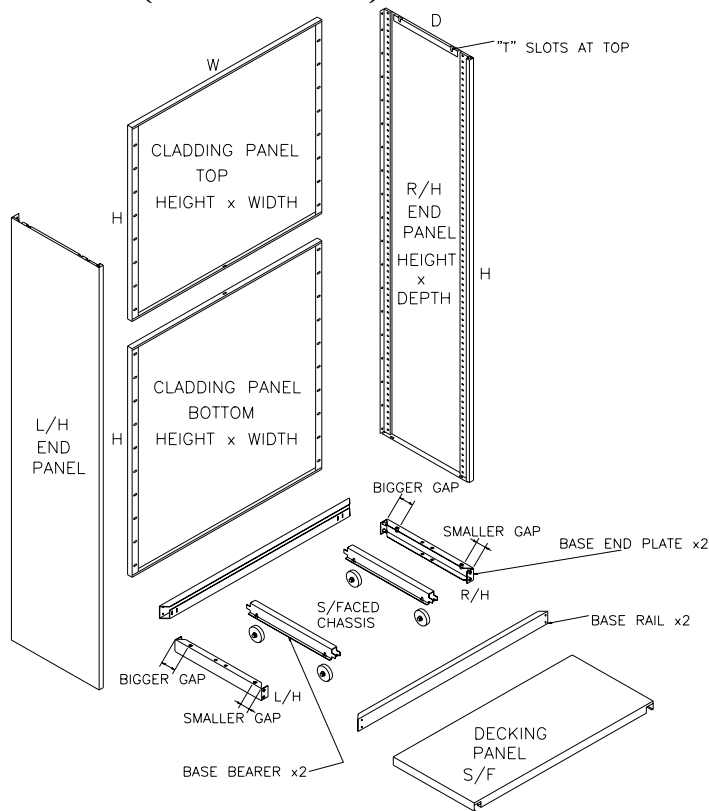
Step 2 Insert bottom back panel into end panels ensuring tabs fit into slots in decking panel. Bolt end panels and back panel half way up the bottom back panel and very bottom hole. Insert top back panel so one hole overlaps with bottom back panel and top back panel is flush with top of end panels. Then half way up top back panel and very top hole. Fit end panels at other end and bolt through as before.

Step 3 Pre-assemble bolts into each end of top shelf and slot into end panels. Tighten all bolts starting with back panels. D/F unit will provide square ness for S/F and static.

Step 4 Using M6 x 12 button head cap screws provided bolt on handle through holes provided so bottom of handle is 1000mm from bottom of track.

Step 5 Slot in shelf clips to suit shelf spacing then place shelves on to clips.

BUILDING UNITS (S/F MOBILE)



- Step 1** Using 6mm gutter bolts attach end panel to one end only of chassis by screwing gutter bolts into nutserts.
- Step 2** Bolt on bottom cladding panel in 3 places, top, middle and bottom, doing up nuts and bolts finger tight only at this stage. Repeat for top cladding panel.
- Step 3** Same as step 1 screw end panel to chassis with gutter bolts. Then bolt on cladding panels to match the other side once again finger tight only.
- Step 4** Line up top and bottom cladding panels so sides of cladding panels are flush and bolt both cladding panels together through centre slot tighten so cladding panels stay together. Pre-assemble bolts into each end of top shelf and slot into end panels. Once done, line up S/F unit with D/F unit, when S/F unit matches D/F unit tighten up all nuts and bolts in cladding panels. So unit is rigid, square up bottom edge of cladding panel with chassis. Attach cladding panel to chassis rail with button head tek screw.
- Step 5** Using handle template drill holes for handle position. Template is to be central to width of whole unit (including cladding panel), and bottom of handle template to be 785mm from top of track.
- NB** 4 holes are to be drilled for handle position on S/F mobile units (do not use the two holes that are pre-punched)
- Step 6** Slot in shelf clips to suit shelf spacing and place shelves onto clips.

INTERNAL LOCK

- Step 1** Slide all chassis up to end unit (wall).
- Step 2** Line up end panel with chassis to determine correct lock hole.
- Step 3** Using a 7.5mm drill bit, drill through correct lock hole in chassis into the I.F.S. track.

